



superInk

THE TRUE SECRET FOR QUALITY PRINTS!

COMPATIBLE INK FOR HP PRINTERS - USER MANUAL

Dear customer, thank you for purchasing a superInk product.

The difference between a good and a bad print depends on several factors and one of the most important is certainly the quality of the inks used.

superInk inks are of high quality, produced exclusively by industry leaders and bottled on behalf of superInk.

superInk ink bottles are designed to preserve the product for as long as a possible and are custom made, with an embossed logo (for a total guarantee of the product), a convenient graduated scale and special reinforcements on the sides for maximum resistance even in the event of accidental knocks or falls.

The product is compatible with all major HP (Hewlett-Packard) inkjet printers.



For **more detailed refilling instructions**, tip's and printing tests, please visit the official superInk website using the QR-CODE printed here or by directly entering the following URL in the device browser:

<https://www.superink.jp/en/info/refill-instructions>    (日本語, English, italiano)

Package Contents



Bottled
Ink



10 ml graduated syringe
(complete with needle and cap)



Gloves

Note that the contents of the package may vary according to the product purchased
(each bottle of ink will always come with a kit containing one syringe complete with a needle, cap and a pair of gloves)

RECOMMENDATIONS

- Always follow the refill instructions with the utmost care. Do not to refill cartridges that have been empty for a long time or completely depleted. Best results are obtained by refilling the cartridges before the ink is completely depleted.
- Prepare the work surface to avoid any unwanted stains.
- Wear a pair of protective gloves.
- Always use the same needle for each color.
- Pay attention to the arrangement of the colors in the cartridge (injecting the wrong color will render the cartridge unusable).
If you are unsure of the exact arrangement of colors in the cartridge, use a cotton swab (or a toothpick) to identify each individual color.
- Once refilling is complete, clean the syringes and needles with lukewarm water and always store inks and related accessories safely and away from children and animals. Store away from heat sources and/or direct light.
- To restore the correct ink flow in the cartridge, carry out test prints and, if necessary, conduct one or more cleaning cycles.

Cartridges without printhead (ink-tank)

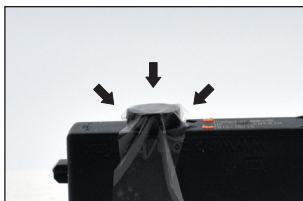


Picture 1 - "Fast" refill without making any new hole



Refill without hole ("A" method)

- Place absorbent paper on the work surface to soak up any ink leaks from the air inlet of the cartridge
- Turn the cartridge upside down and drop the ink directly onto the sponge (picture 1) of the cartridge outlet. In order to avoid the formation of any air bubbles, we recommend performing the refilling procedure slowly



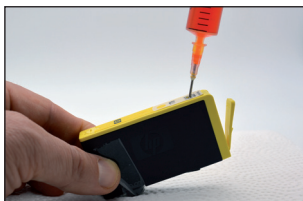
Picture 2



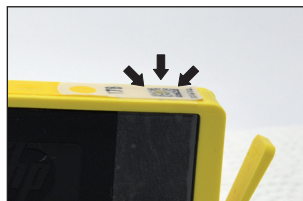
Picture 3

Top hole refill ("B" method)

- Turn the cartridge upside down and seal the ink outlet (picture 2) with adhesive tape.
- Turn the cartridge over again and drill a hole of about 2mm in diameter (picture 3)
Alternatively, the hole can also be drilled using a heated staple
- Slowly inject the ink needed for refilling (picture 4)
- Clean the refill upper hole with a paper towel and seal it with adhesive tape (picture 5) or with hot glue (alternatively we recommend using the colored silicone plugs of our Refill Set to speed up subsequent refills and avoid any errors with the different colors)
- Turn the cartridge upside down one last time and remove the adhesive tape, making sure there are no leaks



Picture 4



Picture 5

[WARNING] CARTRIDGE / INK LEVEL RESET (for both refill methods)

Once the cartridge has been refilled, the printer may detect it as empty and report an error in relation to the ink level ("unknown") of the cartridge you have just refilled. In this case it will be necessary to deactivate the ink level control function by pressing the "OK" button (or equivalent) on the printer.

If the previous procedure has no effect the microchip on the cartridge must be reset using a special "resetter" which reprograms the microchip, making the cartridge usable again.



super^{ink}

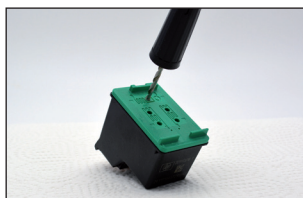
THE TRUE SECRET FOR QUALITY PRINTS!

COMPATIBLE INK FOR HP PRINTERS - USER MANUAL

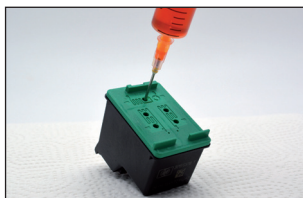
Cartridges with printhead



Picture 1



Picture 2



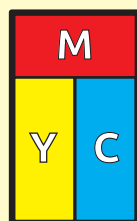
Picture 3



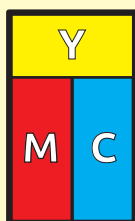
Picture 4

- Remove the upper label from the cartridge and locate the refill hole(s) (picture 1). If the refill holes are not present, it will be necessary to create holes of about 2 mm in diameter as indicated (picture 2) using a small manual drill (we recommend our Refill Set which includes a set of basic tools to be used for normal refilling operations)
- If you are refilling a color cartridge, accurately identify the colors arrangement by referring to the "Color Legend" below. If you are unsure of the exact arrangement of colors in the cartridge, use a cotton swab (or a toothpick) to identify each individual color
- Insert the needle into the refill hole (picture 3) about 2 cm (do not insert the needle all the way because it could damage any filters located at the base of the cartridge)
- Slowly inject the ink and repeat the operation for each color you want to refill, using a different syringe and needle at each color change, or rinse the syringe and needle carefully before refilling the next color
- Pay particular attention not to inject too much ink to avoid "color contamination" (if you inject too much ink the excess liquid will pour into the adjacent compartment, making the cartridge permanently unusable!)
- Clean the refill holes with paper towels and seal them by repositioning the previously removed label. If it is not possible to use the original label, seal the holes with adhesive tape, paying particular attention not to cover the ventilation hole (picture 4)

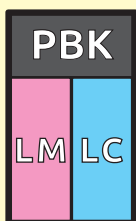
Colors arrangement legend



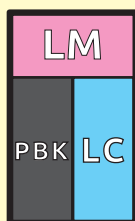
22/28/57
61/62/63 XL
64/65/804



60/61/62/63/67
110/121
134/135/136
141



138



58

WARNING: Once the cartridge has been refilled, the printer may detect it as empty. In this case it will be necessary to deactivate the ink level control function by pressing the "OK" button (or similar) on the printer.

Ink tanks 932-933 and 950-951 series

Refill without hole ("A" method)

- Locate the entrance hole for refilling (picture 1)
- Insert the syringe needle into the refill hole at an angle of about 75° (picture 2). Insert the needle to approximately half its length. To avoid unwanted spills slowly inject the ink

Top hole refill ("B" method)

- Place the cartridge horizontally and drill a hole of about 2 mm in diameter (picture 3), being careful NOT to puncture the inner bag below
- Slowly inject the ink needed for refilling (picture 4)
- Clean the refill hole with a paper towel and seal it with adhesive tape or with hot glue (alternatively we recommend using the colored silicone caps of our Refill Set to speed up subsequent refills and avoid any errors with the different colors)

[WARNING] CARTRIDGE / INK LEVEL RESET (for both refill methods)

Once the cartridge has been refilled, the printer may detect it as empty. In this case it will be necessary to deactivate the ink level control function by pressing the "OK" button (or similar) on the printer.



Picture 1



Picture 2



Picture 3



Picture 4

